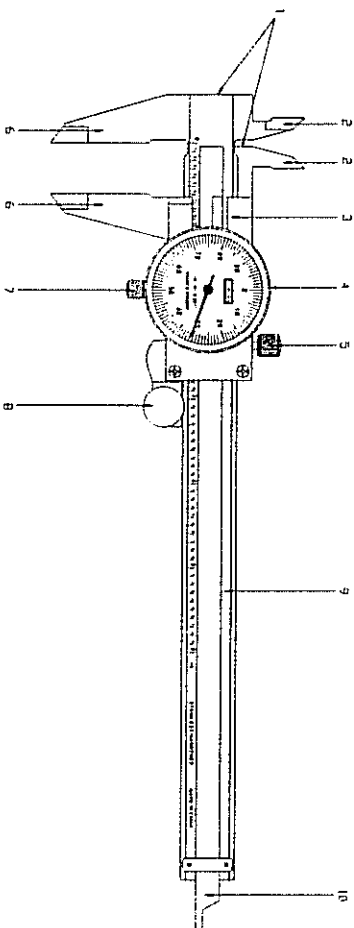




OPERATION INSTRUCTION

Dial Caliper 0-6"

Measuring range: 0-6"
Accuracy: 0.001"
Graduation: 0.001"



- 1-Step measuring faces
- 2-Internal measuring jaws
- 3-Vernier
- 4-Bezel
- 5-Locking screw
- 6-External measuring jaws
- 7-Bezel locking screw
- 8-Thumb wheel
- 9-Beam
- 10-Depth measuring bar

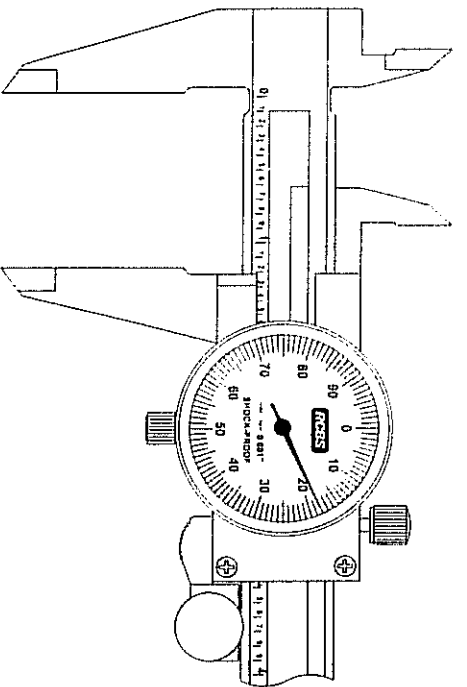
1. Clean measuring faces before use.
2. Remove cutting chips, dust, burrs and other foreign substances from the piece to be measured.
3. Calliper should be frequently checked to make sure that it is properly zero set. Clean external measuring faces and close the external jaws. If needle does not point at zero, calliper needs to be zero set. Loosen bezel locking screw and rotate bezel until needle points to zero, tighten bezel locking screw to lock bezel at the new position. Open and close the external jaws to verify if needle returns to zero.
4. Reading

Example:

The line on beam and on the left of vernier edge is '1.2'.....=1.2"

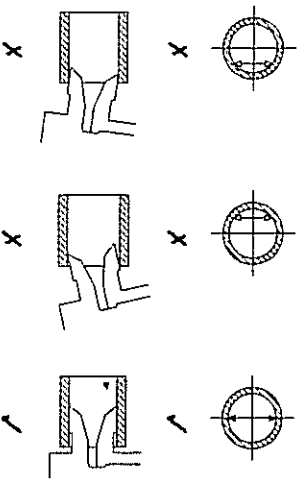
The point of needle is close to line '18' of graduation on dial face.....=0.018"

The reading is: 1.218"

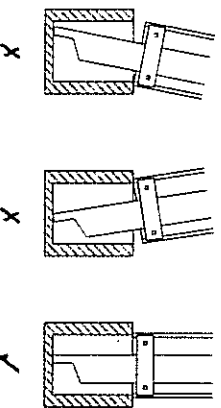


5. Measurement

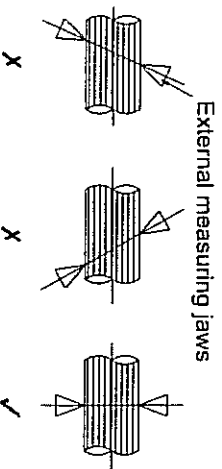
Internal measurement



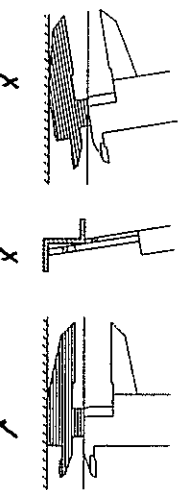
Depth measurement



External measurement



Step measurement



6. Always apply constant force on thumb wheel during measurement and zero setting.
7. Tighten locking screw to hold reading.
8. Measuring faces should be carefully protected from being scratched or damaged. Do not operate abruptly, drop or strike caliper.